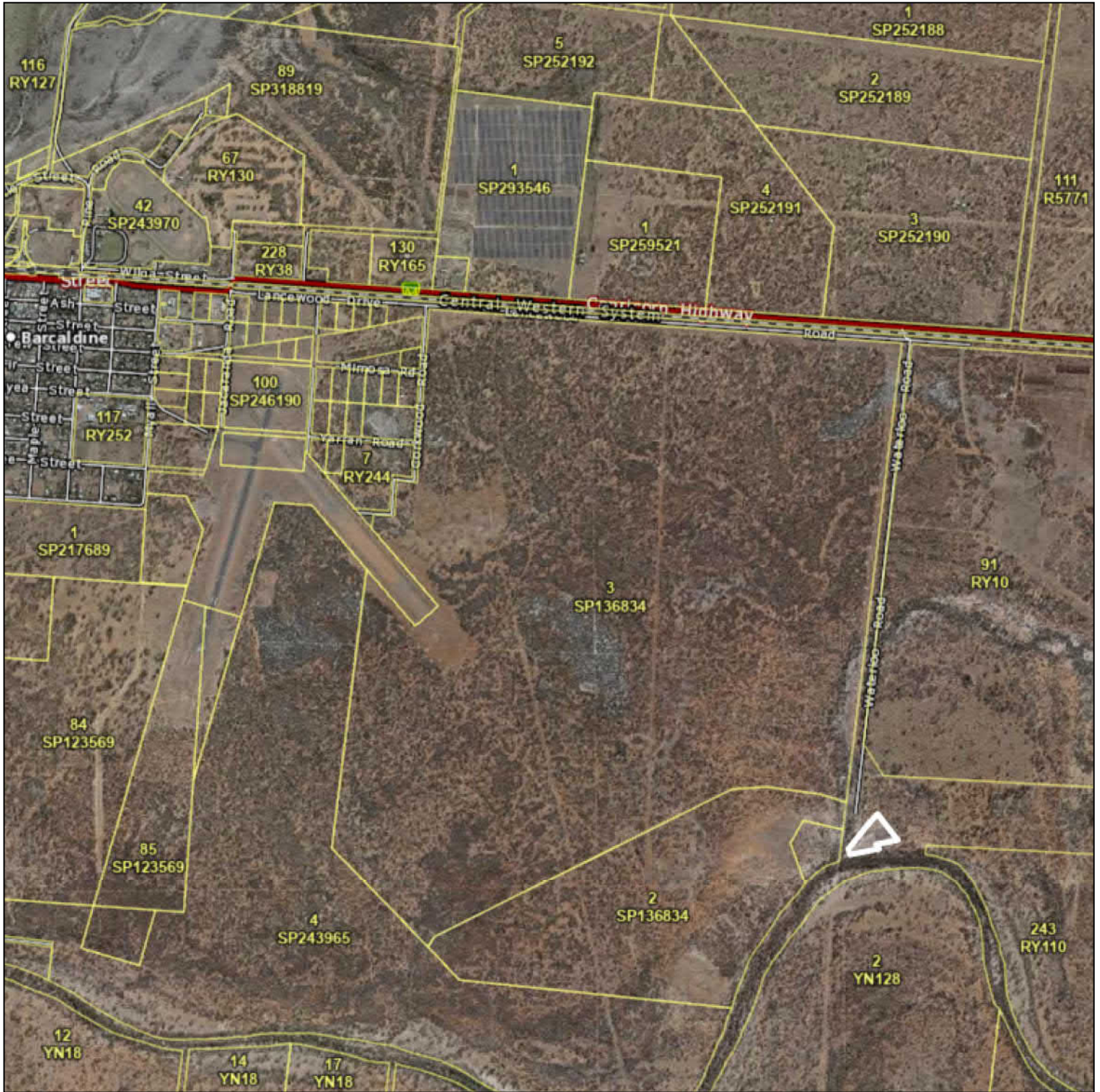


Alice River Date Palm Reserve Locality Map

23°32'16"S 145°17'19"E

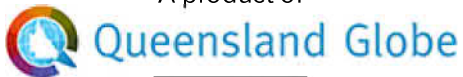
23°32'16"S 145°21'10"E



23°35'48"S 145°17'19"E

23°35'48"S 145°21'10"E

A product of



0 1 km

Scale: 1:36111

Printed at: A4

Print date: 27/9/2021

Datum: Geocentric Datum of Australia 1994
Projection: Web Mercator EPSG 102100

For more information, visit
<https://qldglobe.information.qld.gov.au/help-info/Contact-us.html>

Includes material © State of Queensland 2021. You are responsible for ensuring that the map is suitable for your purposes. The State of Queensland makes no representation or warranties in relation to the map contents and disclaims all liability.

If imagery is displayed, imagery includes material © CNES reproduced under license from Airbus DS, all rights reserved © 21AT © Earth-i, all rights reserved, 2019



Alice River Date Palm Reserve

(The Date Farm / Government Experimental Farm at the Four-Mile)

23°34'51"S 145°20'15"E

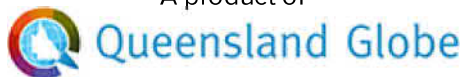
23°34'51"S 145°20'30"E



23°35'5"S 145°20'15"E

23°35'5"S 145°20'30"E

A product of



0 50 metres

Scale: 1:2286

Printed at: A4

Print date: 27/9/2021

Datum: Geocentric Datum of Australia 1994
Projection: Web Mercator EPSG 102100

For more information, visit
<https://qldglobe.information.qld.gov.au/help-info/Contact-us.html>



Includes material © State of Queensland 2021. You are responsible for ensuring that the map is suitable for your purposes. The State of Queensland makes no representation or warranties in relation to the map contents and disclaims all liability.

If imagery is displayed, imagery includes material © CNES reproduced under license from Airbus DS, all rights reserved © 21AT © Earth-i, all rights reserved, 2019

Alpha Railway Complex and Beta Railway Hut

(Rowley Roberts Tourist Information Centre)

23°38'54"S 146°38'28"E

23°38'54"S 146°38'31"E



23°38'57"S 146°38'28"E

23°38'57"S 146°38'31"E

A product of



0 10 metres

Scale: 1:500

Printed at: A4

Print date: 28/9/2021

Datum: Geocentric Datum of Australia 1994
Projection: Web Mercator EPSG 102100

For more information, visit
<https://qldglobe.information.qld.gov.au/help-info/Contact-us.html>



Includes material © State of Queensland 2021. You are responsible for ensuring that the map is suitable for your purposes. The State of Queensland makes no representation or warranties in relation to the map contents and disclaims all liability.

If imagery is displayed, imagery includes material © CNES reproduced under license from Airbus DS, all rights reserved © 21AT © Earth-i, all rights reserved, 2019

Back Creek Bore

23°34'10"S 145°40'4"E

23°34'10"S 145°40'11"E



23°34'17"S 145°40'4"E

23°34'17"S 145°40'11"E

A product of



Scale: 1:1107

Printed at: A4

Print date: 27/9/2021

Datum: Geocentric Datum of Australia 1994
Projection: Web Mercator EPSG 102100

For more information, visit
<https://qldglobe.information.qld.gov.au/help-info/Contact-us.html>

Includes material © State of Queensland 2021. You are responsible for ensuring that the map is suitable for your purposes. The State of Queensland makes no representation or warranties in relation to the map contents and disclaims all liability.

If imagery is displayed, imagery includes material © CNES reproduced under license from Airbus DS, all rights reserved © 21AT © Earth-i, all rights reserved, 2019



Back Creek Bore Locality Map

23°33'21"S 145°38'59"E

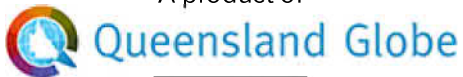
23°33'21"S 145°40'55"E



23°35'8"S 145°38'59"E

23°35'8"S 145°40'55"E

A product of



0 500 metres

Scale: 1:18055

Printed at: A4

Print date: 27/9/2021

Datum: Geocentric Datum of Australia 1994
Projection: Web Mercator EPSG 102100

For more information, visit
<https://qldglobe.information.qld.gov.au/help-info/Contact-us.html>

Includes material © State of Queensland 2021. You are responsible for ensuring that the map is suitable for your purposes. The State of Queensland makes no representation or warranties in relation to the map contents and disclaims all liability.

If imagery is displayed, imagery includes material © CNES reproduced under license from Airbus DS, all rights reserved © 21AT © Earth-i, all rights reserved, 2019



Barcaldine Court House

23°33'13"S 145°17'22"E

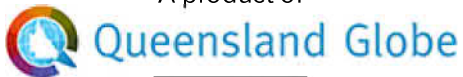
23°33'13"S 145°17'26"E



23°33'17"S 145°17'22"E

23°33'17"S 145°17'26"E

A product of



Includes material © State of Queensland 2021. You are responsible for ensuring that the map is suitable for your purposes. The State of Queensland makes no representation or warranties in relation to the map contents and disclaims all liability.

If imagery is displayed, imagery includes material © CNES reproduced under license from Airbus DS, all rights reserved © 21AT © Earth-i, all rights reserved, 2019



0 10 metres



Scale: 1:650

Printed at: A4

Print date: 28/9/2021

Datum: Geocentric Datum of Australia 1994
Projection: Web Mercator EPSG 102100

For more information, visit
<https://qldglobe.information.qld.gov.au/help-info/Contact-us.html>



**Queensland
Government**

Department of Resources

Barcaldine Grandstand

(Ted Seaby Stand)

23°33'1"S 145°17'38"E

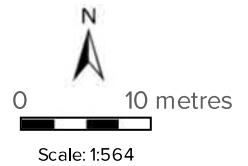
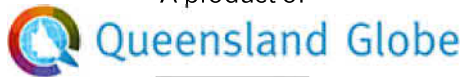
23°33'1"S 145°17'41"E



23°33'5"S 145°17'38"E

23°33'5"S 145°17'41"E

A product of



Printed at: A4
Print date: 28/9/2021

Datum: Geocentric Datum of Australia 1994
Projection: Web Mercator EPSG 102100

For more information, visit
<https://qldglobe.information.qld.gov.au/help-info/Contact-us.html>



Includes material © State of Queensland 2021. You are responsible for ensuring that the map is suitable for your purposes. The State of Queensland makes no representation or warranties in relation to the map contents and disclaims all liability.

If imagery is displayed, imagery includes material © CNES reproduced under license from Airbus DS, all rights reserved © 21AT © Earth-i, all rights reserved, 2019

Barcaldine Grandstand Locality Map

23°32'48"S 145°17'23"E

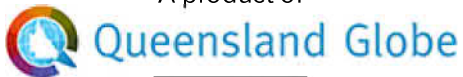
23°32'48"S 145°17'52"E



23°33'15"S 145°17'23"E

23°33'15"S 145°17'52"E

A product of



0 100 metres

Scale: 1:4513

Printed at: A4

Print date: 28/9/2021

Datum: Geocentric Datum of Australia 1994
Projection: Web Mercator EPSG 102100

For more information, visit
<https://qldglobe.information.qld.gov.au/help-info/Contact-us.html>

Includes material © State of Queensland 2021. You are responsible for ensuring that the map is suitable for your purposes. The State of Queensland makes no representation or warranties in relation to the map contents and disclaims all liability.

If imagery is displayed, imagery includes material © CNES reproduced under license from Airbus DS, all rights reserved © 21AT © Earth-i, all rights reserved, 2019



Barcaldine Railway Complex

23°32'48"S 145°17'10"E

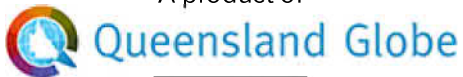
23°32'48"S 145°17'42"E



23°33'18"S 145°17'10"E

23°33'18"S 145°17'42"E

A product of



0 100 metres

Scale: 1:5000

Printed at: A4

Print date: 23/3/2022

Projection: Web Mercator EPSG 102100 (3857)

For more information, visit
<https://qldglobe.information.qld.gov.au/help-info/Contact-us.html>

Includes material © State of Queensland 2022. You are responsible for ensuring that the map is suitable for your purposes. The State of Queensland makes no representation or warranties in relation to the map contents and disclaims all liability.

If imagery is displayed, imagery includes material © CNES reproduced under license from Airbus DS, all rights reserved © 21AT © Earth-i, all rights reserved, 2019



Barcaldine State School (former) Locality Map

23°33'6"S 145°17'7"E

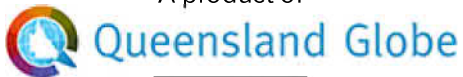
23°33'6"S 145°17'19"E



23°33'18"S 145°17'7"E

23°33'18"S 145°17'19"E

A product of



0 50 metres

Scale: 1:2000

Printed at: A4

Print date: 28/9/2021

Datum: Geocentric Datum of Australia 1994
Projection: Web Mercator EPSG 102100

For more information, visit
<https://qldglobe.information.qld.gov.au/help-info/Contact-us.html>



Includes material © State of Queensland 2021. You are responsible for ensuring that the map is suitable for your purposes. The State of Queensland makes no representation or warranties in relation to the map contents and disclaims all liability.

If imagery is displayed, imagery includes material © CNES reproduced under license from Airbus DS, all rights reserved © 21AT © Earth-i, all rights reserved, 2019

Barcaldine State School (former)

23°33'12"S 145°17'11"E

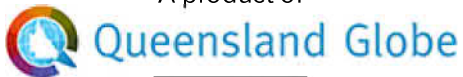
23°33'12"S 145°17'14"E



23°33'15"S 145°17'11"E

23°33'15"S 145°17'14"E

A product of



0 10 metres

Scale: 1:550

Printed at: A4

Print date: 28/9/2021

Datum: Geocentric Datum of Australia 1994
Projection: Web Mercator EPSG 102100

For more information, visit
<https://qldglobe.information.qld.gov.au/help-info/Contact-us.html>

Includes material © State of Queensland 2021. You are responsible for ensuring that the map is suitable for your purposes. The State of Queensland makes no representation or warranties in relation to the map contents and disclaims all liability.

If imagery is displayed, imagery includes material © CNES reproduced under license from Airbus DS, all rights reserved © 21AT © Earth-i, all rights reserved, 2019



Barcaldine Water Tower

23°33'22"S 145°17'33"E

23°33'22"S 145°17'37"E



23°33'25"S 145°17'33"E

23°33'25"S 145°17'37"E

A product of



Includes material © State of Queensland 2021. You are responsible for ensuring that the map is suitable for your purposes. The State of Queensland makes no representation or warranties in relation to the map contents and disclaims all liability.

If imagery is displayed, imagery includes material © CNES reproduced under license from Airbus DS, all rights reserved © 21AT © Earth-i, all rights reserved, 2019



0 10 metres

Scale: 1:564

Printed at: A4

Print date: 28/9/2021

Datum: Geocentric Datum of Australia 1994
Projection: Web Mercator EPSG 102100

For more information, visit
<https://qldglobe.information.qld.gov.au/help-info/Contact-us.html>

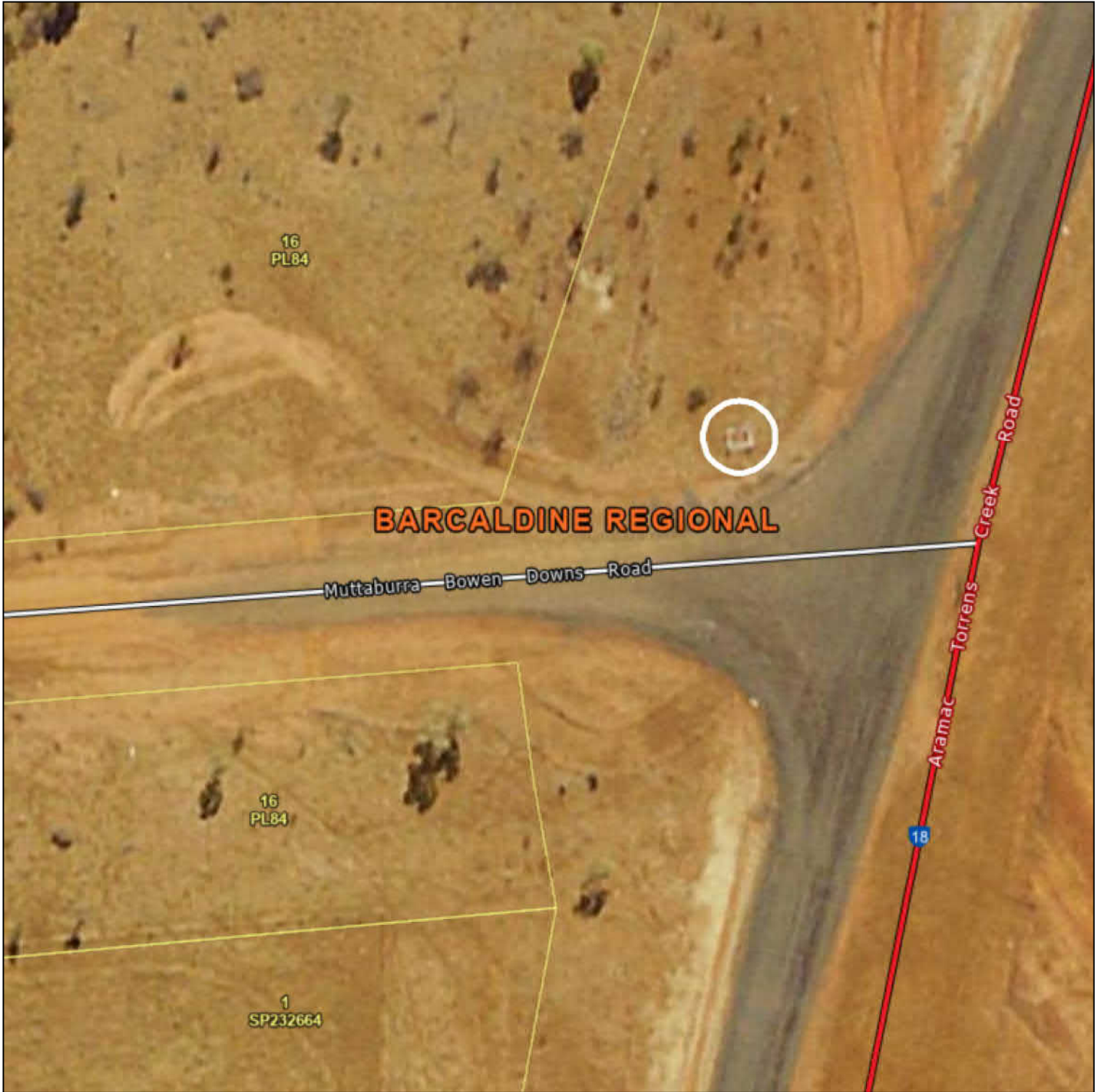


Bowen Downs Grave Site #1

(Grave of Andrew John Phillips (or Phillipp), died 27 April 1920)

22°27'26"S 145°0'26"E

22°27'26"S 145°0'30"E



22°27'30"S 145°0'26"E

22°27'30"S 145°0'30"E

A product of



0 10 metres



Scale: 1:750

Printed at: A4

Print date: 28/9/2021

Datum: Geocentric Datum of Australia 1994
Projection: Web Mercator EPSG 102100

For more information, visit
<https://qldglobe.information.qld.gov.au/help-info/Contact-us.html>



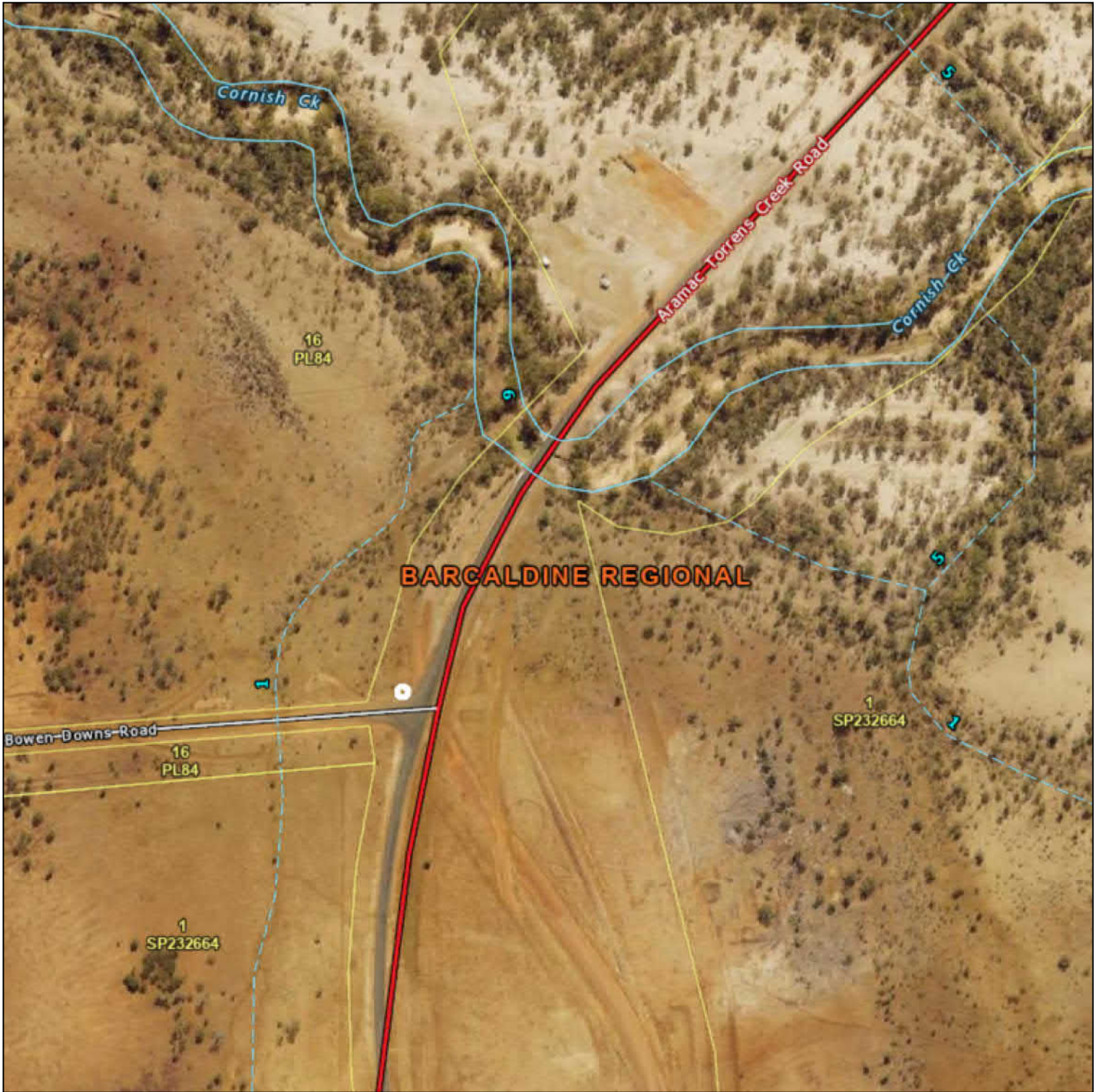
Includes material © State of Queensland 2021. You are responsible for ensuring that the map is suitable for your purposes. The State of Queensland makes no representation or warranties in relation to the map contents and disclaims all liability.

If imagery is displayed, imagery includes material © CNES reproduced under license from Airbus DS, all rights reserved © 21AT © Earth-i, all rights reserved, 2019

Bowen Downs Grave Site #1 Locality Map

22°27'9"S 145°0'17"E

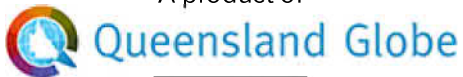
22°27'9"S 145°0'49"E



22°27'38"S 145°0'17"E

22°27'38"S 145°0'49"E

A product of



0 100 metres

Scale: 1:5000

Printed at: A4

Print date: 28/9/2021

Datum: Geocentric Datum of Australia 1994
Projection: Web Mercator EPSG 102100

For more information, visit
<https://qldglobe.information.qld.gov.au/help-info/Contact-us.html>

Includes material © State of Queensland 2021. You are responsible for ensuring that the map is suitable for your purposes. The State of Queensland makes no representation or warranties in relation to the map contents and disclaims all liability.

If imagery is displayed, imagery includes material © CNES reproduced under license from Airbus DS, all rights reserved © 21AT © Earth-i, all rights reserved, 2019



Bowen Downs Ruins

22°27'8"S 144°59'57"E

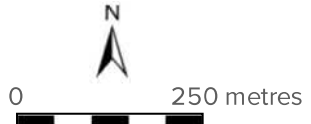
22°27'8"S 145°11"E



22°28'7"S 144°59'57"E

22°28'7"S 145°11"E

A product of
 Queensland Globe



Scale: 1:10000

Printed at: A4
Print date: 23/3/2022

Projection: Web Mercator EPSG 102100 (3857)

For more information, visit
<https://qldglobe.information.qld.gov.au/help-info/Contact-us.html>

Includes material © State of Queensland 2022. You are responsible for ensuring that the map is suitable for your purposes. The State of Queensland makes no representation or warranties in relation to the map contents and disclaims all liability.

If imagery is displayed, imagery includes material © CNES reproduced under license from Airbus DS, all rights reserved © 21AT © Earth-i, all rights reserved, 2019



Cassimatis Store and Cottage

22°35'32"S 144°32'44"E

22°35'32"S 144°32'51"E



22°35'37"S 144°32'44"E

22°35'37"S 144°32'51"E

A product of



Scale: 1:1000

Printed at: A4

Print date: 28/9/2021

Datum: Geocentric Datum of Australia 1994
Projection: Web Mercator EPSG 102100

For more information, visit
<https://qldglobe.information.qld.gov.au/help-info/Contact-us.html>

Includes material © State of Queensland 2021. You are responsible for ensuring that the map is suitable for your purposes. The State of Queensland makes no representation or warranties in relation to the map contents and disclaims all liability.

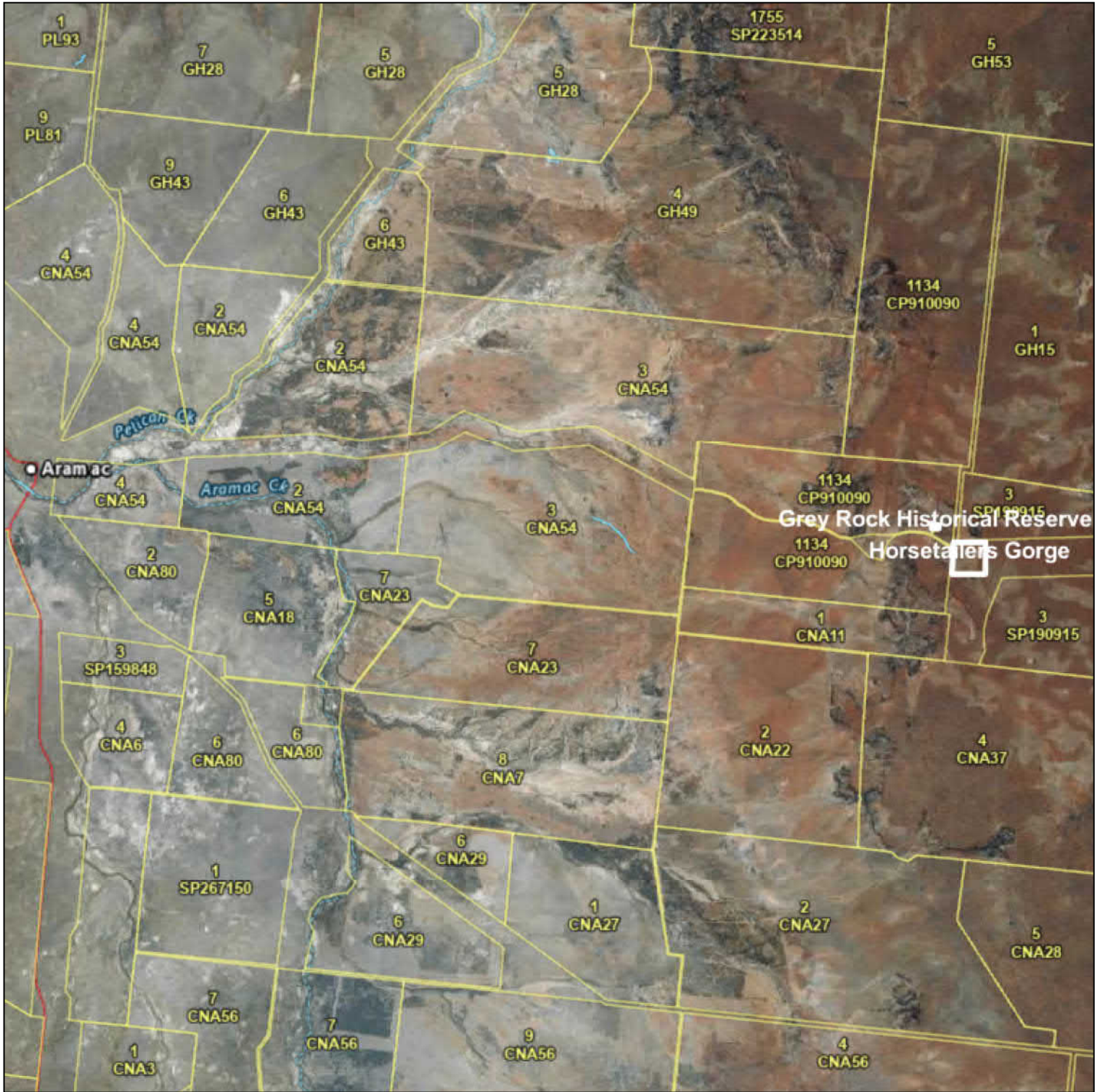
If imagery is displayed, imagery includes material © CNES reproduced under license from Airbus DS, all rights reserved © 21AT © Earth-i, all rights reserved, 2019



Grey Rock Historical Reserve and Horsetailers Gorge Locali...

22°47'41"S 145°13'56"E

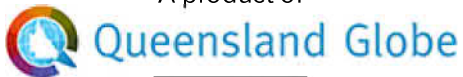
22°47'41"S 145°40'38"E



23°12'15"S 145°13'56"E

23°12'15"S 145°40'38"E

A product of



0 5 km

Scale: 1:250000

Printed at: A4

Print date: 29/9/2021

Datum: Geocentric Datum of Australia 1994
Projection: Web Mercator EPSG 102100

For more information, visit
<https://qldglobe.information.qld.gov.au/help-info/Contact-us.html>



Includes material © State of Queensland 2021. You are responsible for ensuring that the map is suitable for your purposes. The State of Queensland makes no representation or warranties in relation to the map contents and disclaims all liability.

If imagery is displayed, imagery includes material © CNES reproduced under license from Airbus DS, all rights reserved © 21AT © Earth-i, all rights reserved, 2019

Grey Rock Historical Reserve

22°59'21"S 145°36'26"E

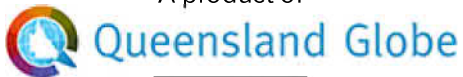
22°59'21"S 145°37'24"E



23°0'14"S 145°36'26"E

23°0'14"S 145°37'24"E

A product of



0 250 metres

Scale: 1:9000

Printed at: A4

Print date: 28/9/2021

Datum: Geocentric Datum of Australia 1994
Projection: Web Mercator EPSG 102100

For more information, visit
<https://qldglobe.information.qld.gov.au/help-info/Contact-us.html>

Includes material © State of Queensland 2021. You are responsible for ensuring that the map is suitable for your purposes. The State of Queensland makes no representation or warranties in relation to the map contents and disclaims all liability.

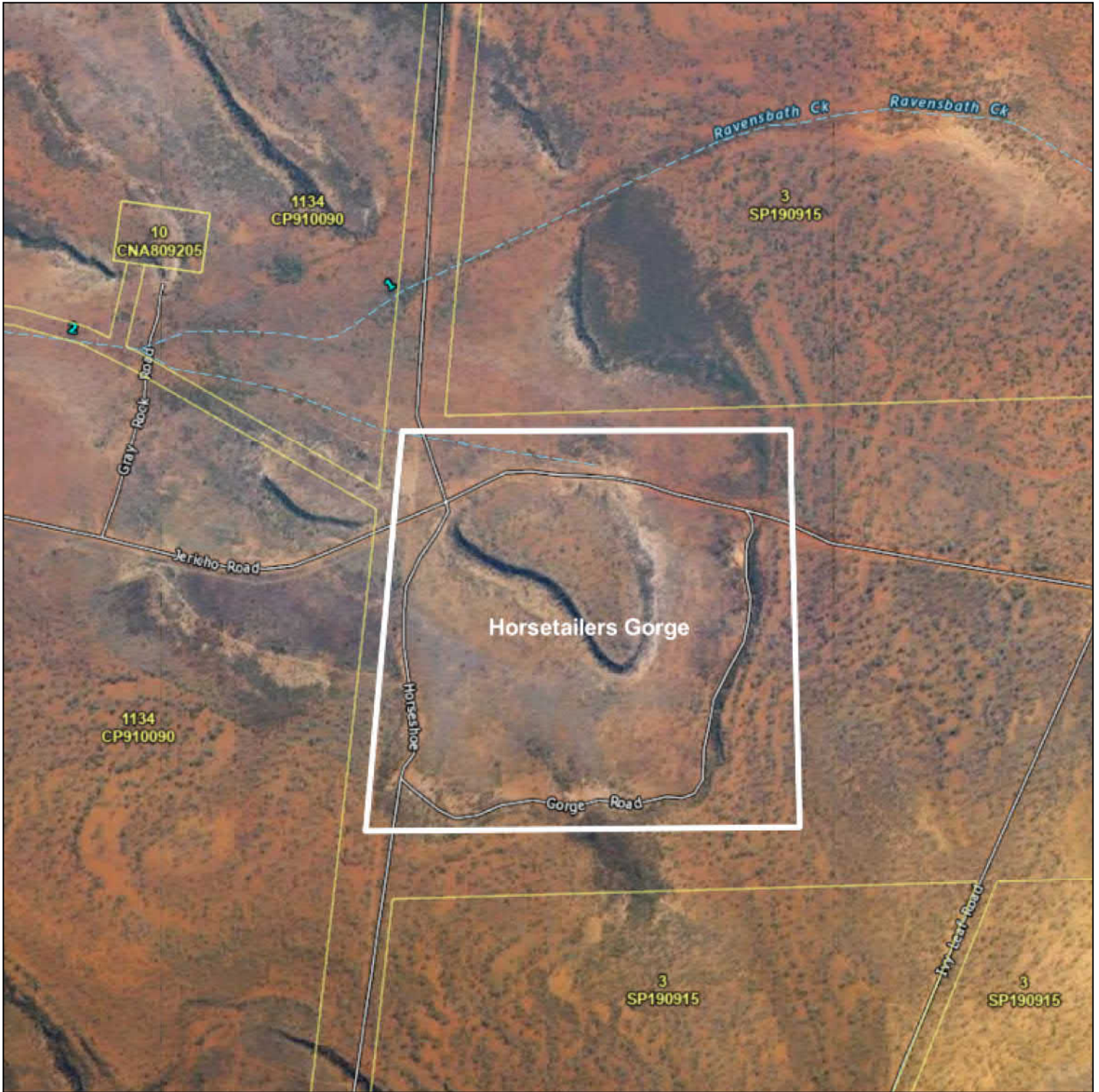
If imagery is displayed, imagery includes material © CNES reproduced under license from Airbus DS, all rights reserved © 21AT © Earth-i, all rights reserved, 2019



Horsetailers Gorge

22°59'5"S 145°36'27"E

22°59'5"S 145°38'36"E



23°13'S 145°36'27"E

23°13'S 145°38'36"E

A product of



0 500 metres

Scale: 1:20000

Printed at: A4

Print date: 29/9/2021

Datum: Geocentric Datum of Australia 1994
Projection: Web Mercator EPSG 102100

For more information, visit
<https://qldglobe.information.qld.gov.au/help-info/Contact-us.html>

Includes material © State of Queensland 2021. You are responsible for ensuring that the map is suitable for your purposes. The State of Queensland makes no representation or warranties in relation to the map contents and disclaims all liability.

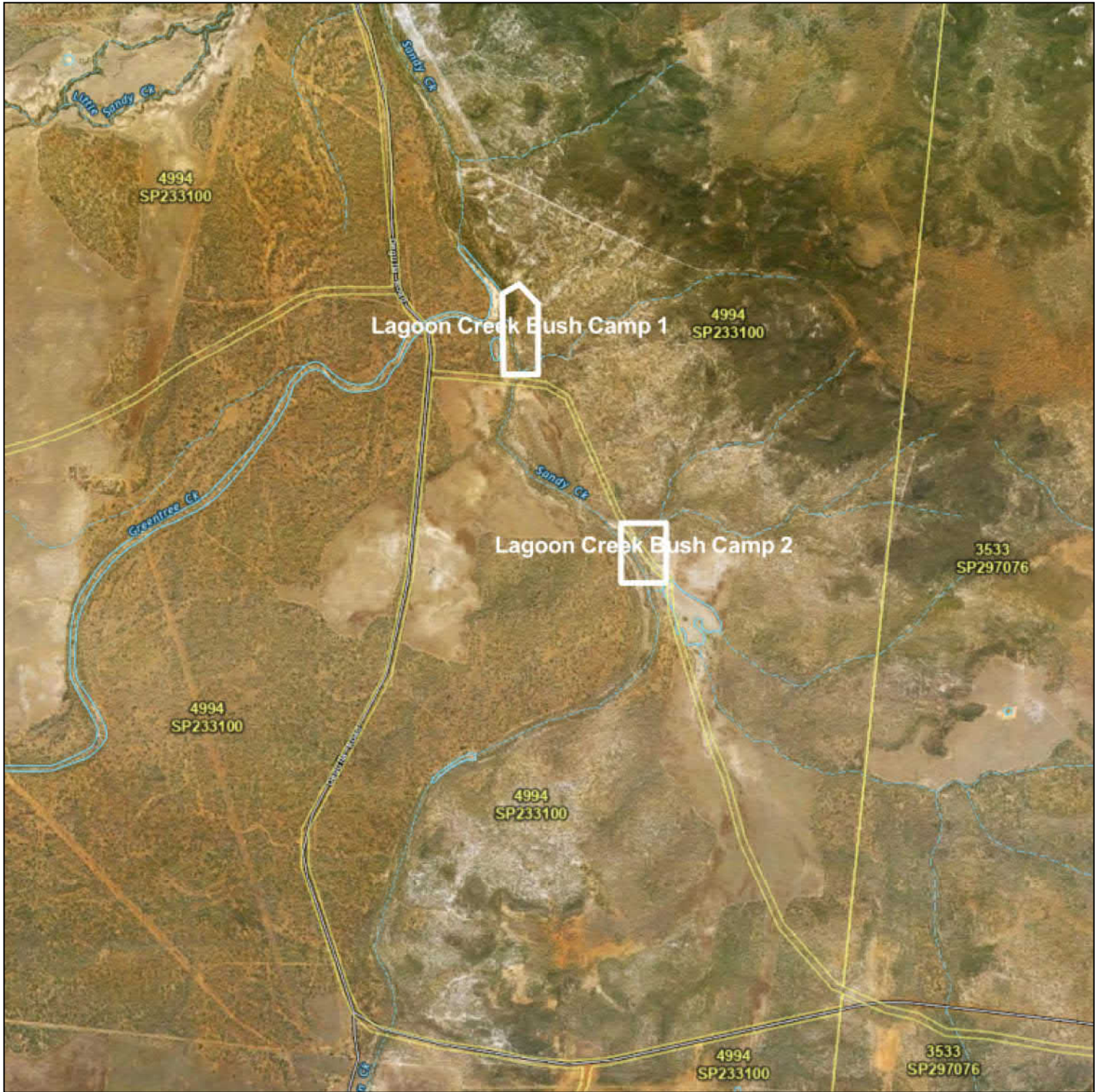
If imagery is displayed, imagery includes material © CNES reproduced under license from Airbus DS, all rights reserved © 21AT © Earth-i, all rights reserved, 2019



Lagoon Creek Bush Camp 1 & 2 Locality Map

23°5'32"S 146°28'9"E

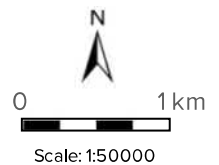
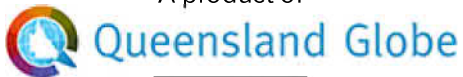
23°5'32"S 146°33'30"E



23°10'27"S 146°28'9"E

23°10'27"S 146°33'30"E

A product of



Printed at: A4

Print date: 29/9/2021

Datum: Geocentric Datum of Australia 1994
Projection: Web Mercator EPSG 102100

For more information, visit
<https://qldglobe.information.qld.gov.au/help-info/Contact-us.html>

Includes material © State of Queensland 2021. You are responsible for ensuring that the map is suitable for your purposes. The State of Queensland makes no representation or warranties in relation to the map contents and disclaims all liability.

If imagery is displayed, imagery includes material © CNES reproduced under license from Airbus DS, all rights reserved © 21AT © Earth-i, all rights reserved, 2019



Lagoon Creek Bush Camp 1 including Kate Doonan's Grave...

23°6'39"S 146°30'8"E

23°6'39"S 146°30'51"E



23°7'19"S 146°30'8"E

23°7'19"S 146°30'51"E

A product of



Includes material © State of Queensland 2022. You are responsible for ensuring that the map is suitable for your purposes. The State of Queensland makes no representation or warranties in relation to the map contents and disclaims all liability.

If imagery is displayed, imagery includes material © CNES reproduced under license from Airbus DS, all rights reserved © 21AT © Earth-i, all rights reserved, 2019



0 100 metres

Scale: 1:6750

Printed at: A4

Print date: 24/2/2022

Projection: Web Mercator EPSG 102100 (3857)

For more information, visit <https://qldglobe.information.qld.gov.au/help-info/Contact-us.html>



Lagoon Creek Bush Camp 2

23°7'47"S 146°31'2"E

23°7'47"S 146°31'34"E



23°8'16"S 146°31'2"E

23°8'16"S 146°31'34"E

A product of



0 100 metres

Scale: 1:5000

Printed at: A4

Print date: 29/9/2021

Datum: Geocentric Datum of Australia 1994
Projection: Web Mercator EPSG 102100

For more information, visit
<https://qldglobe.information.qld.gov.au/help-info/Contact-us.html>

Includes material © State of Queensland 2021. You are responsible for ensuring that the map is suitable for your purposes. The State of Queensland makes no representation or warranties in relation to the map contents and disclaims all liability.

If imagery is displayed, imagery includes material © CNES reproduced under license from Airbus DS, all rights reserved © 21AT © Earth-i, all rights reserved, 2019



Lands Office (Barcaldine)

23°33'13"S 145°17'24"E

23°33'13"S 145°17'27"E



23°33'16"S 145°17'24"E

23°33'16"S 145°17'27"E

A product of



0 10 metres

Scale: 1:500

Printed at: A4

Print date: 29/9/2021

Datum: Geocentric Datum of Australia 1994
Projection: Web Mercator EPSG 102100

For more information, visit
<https://qldglobe.information.qld.gov.au/help-info/Contact-us.html>

Includes material © State of Queensland 2021. You are responsible for ensuring that the map is suitable for your purposes. The State of Queensland makes no representation or warranties in relation to the map contents and disclaims all liability.

If imagery is displayed, imagery includes material © CNES reproduced under license from Airbus DS, all rights reserved © 21AT © Earth-i, all rights reserved, 2019



Mttaburra Hospital (former)

Dr Arratta Memorial Museum

22°35'51"S 144°32'12"E

22°35'51"S 144°32'19"E



Mttaburra Hospital
(former)

44
CM167

New Bullen Drive

22°35'57"S 144°32'12"E

22°35'57"S 144°32'19"E

A product of



0 25 metres

Scale: 1:1000

Printed at: A4

Print date: 23/2/2022

Projection: Web Mercator EPSG 102100 (3857)

For more information, visit
<https://qldglobe.information.qld.gov.au/help-info/Contact-us.html>

Includes material © State of Queensland 2022. You are responsible for ensuring that the map is suitable for your purposes. The State of Queensland makes no representation or warranties in relation to the map contents and disclaims all liability.

If imagery is displayed, imagery includes material © CNES reproduced under license from Airbus DS, all rights reserved © 21AT © Earth-i, all rights reserved, 2019



Muttaborra Hospital (former) Locality Map

22°35'12"S 144°31'50"E

22°35'12"S 144°32'55"E



22°36'12"S 144°31'50"E

22°36'12"S 144°32'55"E

A product of



Scale: 1:10000

Printed at: A4

Print date: 23/2/2022

Projection: Web Mercator EPSG 102100 (3857)

For more information, visit <https://qldglobe.information.qld.gov.au/help-info/Contact-us.html>



Includes material © State of Queensland 2022. You are responsible for ensuring that the map is suitable for your purposes. The State of Queensland makes no representation or warranties in relation to the map contents and disclaims all liability.

If imagery is displayed, imagery includes material © CNES reproduced under license from Airbus DS, all rights reserved © 21AT © Earth-i, all rights reserved, 2019

Potential Pine Hill Station Building, Alpha

Alpha Rail Shed

23°38'48"S 146°38'26"E

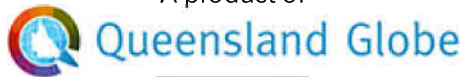
23°38'48"S 146°38'37"E



23°38'58"S 146°38'26"E

23°38'58"S 146°38'37"E

A product of



0 50 metres

Scale: 1:1700

Printed at: A4

Print date: 23/3/2022

Projection: Web Mercator EPSG 102100 (3857)

For more information, visit
<https://qldglobe.information.qld.gov.au/help-info/Contact-us.html>



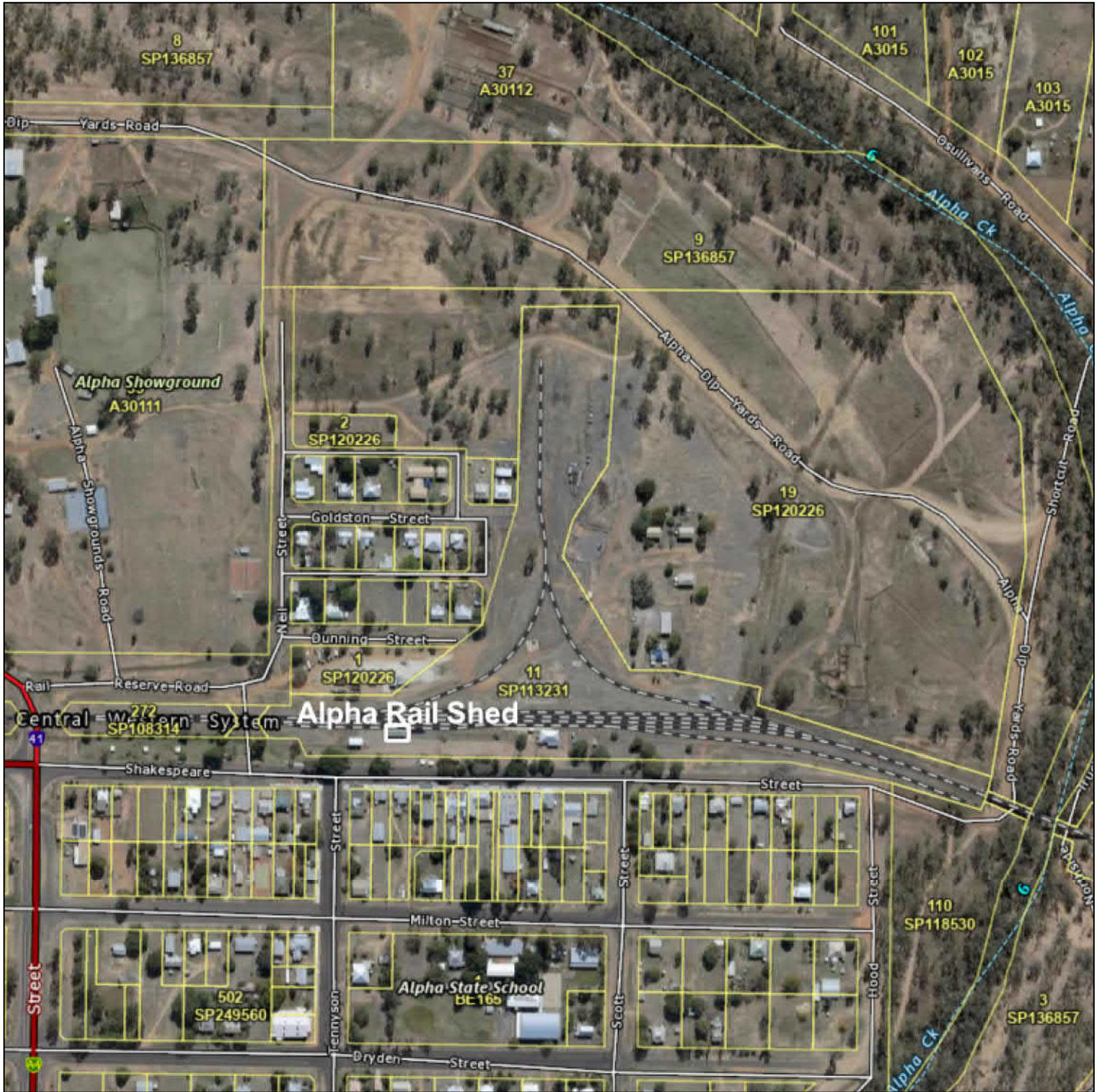
Includes material © State of Queensland 2022. You are responsible for ensuring that the map is suitable for your purposes. The State of Queensland makes no representation or warranties in relation to the map contents and disclaims all liability.

If imagery is displayed, imagery includes material © CNES reproduced under license from Airbus DS, all rights reserved © 21AT © Earth-i, all rights reserved, 2019

Potential Pine Hill Station Building (Alpha Rail Shed) Localit...

23°38'32"S 146°38'16"E

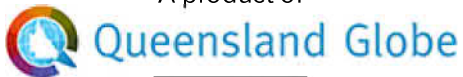
23°38'32"S 146°38'51"E



23°39'4"S 146°38'16"E

23°39'4"S 146°38'51"E

A product of



0 100 metres

Scale: 1:5500

Printed at: A4

Print date: 23/3/2022

Projection: Web Mercator EPSG 102100 (3857)

For more information, visit
<https://qldglobe.information.qld.gov.au/help-info/Contact-us.html>

Includes material © State of Queensland 2022. You are responsible for ensuring that the map is suitable for your purposes. The State of Queensland makes no representation or warranties in relation to the map contents and disclaims all liability.

If imagery is displayed, imagery includes material © CNES reproduced under license from Airbus DS, all rights reserved © 21AT © Earth-i, all rights reserved, 2019



Queensland National Bank (former)

23°33'30"S 145°17'17"E

23°33'30"S 145°17'21"E



23°33'33"S 145°17'17"E

23°33'33"S 145°17'21"E

A product of



0 10 metres

Scale: 1:550

Printed at: A4

Print date: 29/9/2021

Datum: Geocentric Datum of Australia 1994
Projection: Web Mercator EPSG 102100

For more information, visit
<https://qldglobe.information.qld.gov.au/help-info/Contact-us.html>

Includes material © State of Queensland 2021. You are responsible for ensuring that the map is suitable for your purposes. The State of Queensland makes no representation or warranties in relation to the map contents and disclaims all liability.

If imagery is displayed, imagery includes material © CNES reproduced under license from Airbus DS, all rights reserved © 21AT © Earth-i, all rights reserved, 2019



Radio Theatre

23°33'8"S 145°17'16"E

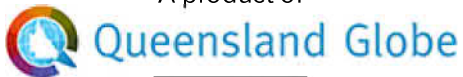
23°33'8"S 145°17'20"E



23°33'13"S 145°17'16"E

23°33'13"S 145°17'20"E

A product of



Legend located on next page



0 10 metres

Scale: 1:750

Printed at: A4

Print date: 5/10/2021

Datum: Geocentric Datum of Australia 1994
Projection: Web Mercator EPSG 102100

For more information, visit
<https://qldglobe.information.qld.gov.au/help-info/Contact-us.html>

Includes material © State of Queensland 2021. You are responsible for ensuring that the map is suitable for your purposes. The State of Queensland makes no representation or warranties in relation to the map contents and disclaims all liability.

If imagery is displayed, imagery includes material © CNES reproduced under license from Airbus DS, all rights reserved © 21AT © Earth-i, all rights reserved, 2019

