



# **Barcaldine Regional Council**

## **Local Heritage Register**

### **Statement of Local Cultural Heritage Significance**

**November 2019**



## Document Control

Rev	Prepared by:			Approved by:	
	Name	Review / Release	Comment	Signature/Name	Date
A	Michael Williams	Review	Draft for Council review		08/02/2019
B	Michael Williams	Review	Draft for Council Review		09/04/2019
C	Michael Williams	Review	Draft for Council Review		11/11/2019
1		Release	Release to Council	<i>K. Luckhurst</i> Keith Luckhurst	13/11/2019

**GBA File/Doc no.** 180101 / 311543

### Contact for enquiries and proposed changes

If you have any questions regarding this document or if you have a suggestion for improvements, please contact:

**Project Manager** Michael Williams  
**Phone** 07 4651 5177

## Table of Contents

<b>1.0</b>	<b>SHOULD PLACES / ITEMS OF CH SIGNIFICANCE BE PUT ON A STATE OR LOCAL HERITAGE REGISTER? .....</b>	<b>1</b>
<b>2.0</b>	<b>IS IT BRC'S RESPONSIBILITY TO MAINTAIN A LOCAL HERITAGE REGISTER? .....</b>	<b>1</b>
<b>3.0</b>	<b>HOW IS A LOCAL HERITAGE REGISTER DEVELOPED? .....</b>	<b>1</b>
<b>4.0</b>	<b>DOES BRC HAVE ANY OTHER REQUIREMENTS / RESPONSIBILITIES?.....</b>	<b>1</b>
<b>5.0</b>	<b>NEW PLACES / ITEMS OF CULTURAL HERITAGE NOT ON THE BRC PLANNING SCHEME.....</b>	<b>2</b>
	5.1. Barcaldine Old Eight Mile Weir .....	3
	5.2. Original Muttaborra Cemetery.....	4
	5.3. Original Alpha Cemetery.....	5
<b>6.0</b>	<b>PLACES AND ITEMS OF CULTURAL HERITAGE CURRENTLY ON THE BRC PLANNING SCHEME .....</b>	<b>7</b>
	6.1. Aramac Cemetery.....	8
	6.2. Muttaborra Cemetery.....	9
	6.3. Barcaldine Cemetery .....	10
	6.4. Alpha Cemetery.....	11
	6.5. Jericho Cemetery.....	12
	6.6. Pine Hill Cemetery.....	13
<b>7.0</b>	<b>REFERENCES.....</b>	<b>14</b>

## **BARCALDINE REGIONAL COUNCIL – LOCAL HERITAGE REGISTER – STATEMENT OF LOCAL CULTURAL HERITAGE SIGNIFICANCE**

### **1.0 SHOULD PLACES / ITEMS OF CH SIGNIFICANCE BE PUT ON A STATE OR LOCAL HERITAGE REGISTER?**

A place should only be put on the State Heritage Register when considered to be of State Significance, i.e. when it contributes to our “understanding of the wider pattern and evolution of Queensland’s history and heritage” (DEHP, 2017). See below excerpt from “About the Queensland Heritage Register”, found at: <https://www.qld.gov.au/environment/land/heritage/register/search>

“The Queensland Heritage Register does not include:

- Places of local heritage significance. Significant local heritage places may be entered in a Local Heritage Register or identified in a local government planning scheme. For information about local heritage registers contact the relevant local government.” (DES, 2019)

Therefore if a place/item has significance only to a specific local area, it should be put on a Local Heritage Register, or as a heritage overlay on a Local Planning Scheme that outlines measures for its protection (DEHP, 2017).

### **2.0 IS IT BRC’S RESPONSIBILITY TO MAINTAIN A LOCAL HERITAGE REGISTER?**

Under the *Queensland Heritage Act 1992*, each local government in QLD are required to maintain a Local Heritage Register, and to manage the entry or removal of places/items on or off its Local Heritage Register (DEHP 2017). Some local governments are exempted from this provision because their planning scheme or local heritage register identifies and makes provision for the conservation of places of cultural heritage significance.”

Barcaldine Regional Council (BRC) may be exempt because its Local Planning Scheme does include provisions for the conservation of places of CH significance in each of BRC’s Local Planning Schemes including the Aramac, Barcaldine, and Jericho Local Planning Scheme documents. For example in the Barcaldine Shire Planning Scheme under the 4.1.3.5 Performance Criteria for a “Building work”, an “Acceptable Solution” is provided on pg. 4.1.25 that states that “A minimum separation distance of 50 metres is provided to cemeteries and burial sites as identified in Schedule 2, Division 6: Places and Items of Cultural Heritage, Section 6.1.” (CHTP 2016).

However, for the purposes of meeting full compliance under the *Queensland Heritage Act 1992*, and for the sake of keeping a robust record of BRC’s new and/or existing places and items of Heritage Significance, a Local Heritage Register should still be developed.

### **3.0 HOW IS A LOCAL HERITAGE REGISTER DEVELOPED?**

In the form of a: significance statement, historical background, physical description, and depiction of a regional boundary, which should include: “enough information to identify the location and boundaries of the place, and a statement about the cultural heritage significance of the place” (DEHP, 2017).

### **4.0 DOES BRC HAVE ANY OTHER REQUIREMENTS / RESPONSIBILITIES?**

Local Governments “must advise the owner of the place and call for public submissions in response to the proposal” (DEHP, 2017). Therefore Council has a responsibility to advise all relevant owners of the land on which the heritage places listed in this register are located. Also, it is Council’s

responsibility to inform the public regarding the proposed Local Heritage Register and take into account any public submissions that respond to the public notice.

An illustrative and/or photographic record detailing the existing nature of the place/item should also be provided in the Local Heritage Register. To meet this requirement, mapping and photographic imagery has been provided in this document for each item.

Please note that the information herein is based on acquired data, and is subject to change on the grounds that new information comes to light.

## 5.0 NEW PLACES / ITEMS OF CULTURAL HERITAGE NOT ON THE BRC PLANNING SCHEME

<b>Place</b>	Barcaldine Old Eight Mile Weir
<b>Former/other name/s</b>	Eight Mile *as referred to in 1941 during its construction, see reference: <i>Longreach Leader</i> (QLD. : 1923 – 1954), Saturday 30 August 1941, p 7. Accessed from: <a href="https://trove.nla.gov.au/newspaper/article/128612008">https://trove.nla.gov.au/newspaper/article/128612008</a>
<b>Location</b>	Barcaldine
<b>Address</b>	Lloyd Jones Weir Road, Barcaldine, QLD, 4725
<b>RPD</b>	N/A (watercourse) Neighbouring RPD: Lot 1 on YN 93, Lot 8 on YN103 & Lot 3 on YN107
<b>Local Government</b>	Barcaldine Regional Council
<b>Heritage Boundary</b>	See attached map

<b>Place</b>	Original Muttaborra Cemetery
<b>Former/other name/s</b>	-
<b>Location</b>	Muttaborra
<b>Address</b>	Muttaborra Cemetery Road off Cramsie Muttaborra Road.
<b>RPD</b>	Lot 40 on CM152
<b>Local Government</b>	Barcaldine Regional Council
<b>Heritage Boundary</b>	See attached map

<b>Place</b>	Original Alpha Cemetery
<b>Former/other name/s</b>	-
<b>Location</b>	Alpha
<b>Address</b>	Alpha Cemetery Road off Clermont Alpha Road
<b>RPD</b>	Lot 57 on SP175997
<b>Local Government</b>	Barcaldine Regional Council
<b>Heritage Boundary</b>	See attached map



### 5.1. Barcaldine Old Eight Mile Weir

PLACE/ITEM DETAILS	
<b>Place</b>	Barcaldine Old Eight Mile Weir
<b>Former/other name</b>	Eight Mile (as referred to in 1941 (ref: 2) during its construction)
<b>Location</b>	Barcaldine, Alice River.
<b>Address</b>	Lloyd Jones Weir Road, Barcaldine, QLD, 4725
<b>RPD</b>	N/A (within watercourse corridor) Neighbouring RPD: Lot 1 on YN 93, Lot 8 on YN103, & Lot 3 on YN107
<b>Local Government</b>	Barcaldine Regional Council
<b>Heritage Boundary</b>	See attached map

STATEMENT OF HERITAGE SIGNIFICANCE	
The Barcaldine Old Eight Mile Weir has Local Heritage Significance under the following Criteria.	
<b>Criteria</b>	<b>Definition</b>
<b>A</b>	<i>Is important in demonstrating the evolution or pattern of the local government area's history.</i>
<b>Statement</b>	The Eight Mile Weir is important in demonstrating the evolution and pattern of the region's history, including the establishment of settlements, leisure activity, and encouraging the growth of local industry.
<b>Criteria</b>	<b>Definition</b>
<b>B</b>	<i>Demonstrates rare, uncommon or endangered aspects of the local government area's cultural heritage.</i>
<b>Statement</b>	The Eight Mile Weir demonstrates a rare aspect of the region's cultural heritage as a surviving method of weir infrastructure used by former residents of the Barcaldine region.
<b>Criteria</b>	<b>Definition</b>
<b>C</b>	<i>Has potential to yield information that will contribute to an understanding of the local government area's history.</i>
<b>Statement</b>	The Eight Mile Weir has the potential to yield information that will contribute to an understanding of the region's history, particularly with: the way local government managed its construction and funding; for its association with nearby infrastructure; and its use as a watercourse for leisure, agriculture, and cultural patterns of settlement and life in the district.
<b>Criteria</b>	<b>Definition</b>
<b>D</b>	<i>Is important in demonstrating the principal characteristics of a particular class of cultural places.</i>
<b>Statement</b>	The Eight Mile Weir is important in demonstrating the principle characteristics of early 1940's weir infrastructure.
<b>Criteria</b>	<b>Definition</b>
<b>E</b>	<i>Is important because of its aesthetic significance to the local community.</i>
<b>Statement</b>	Importance to the region for its aesthetic significance as a surviving structure from historical times, as well its location in a riverine setting, and its association with the nearby Lloyd Jones Weir infrastructure built in the 1950s.
<b>Criteria</b>	<b>Definition</b>
<b>F</b>	<i>Is important in demonstrating a high degree of creative or technical achievement at a particular period.</i>

<b>Statement</b>	The construction of the weir demonstrates innovation of local persons who designed the structure using found materials, such as: clay, iron, wood, and stone; the latter of which reportedly had an unlimited quantity available (ref 1).
<b>Criteria</b>	<b>Definition</b>
<b>G</b>	<i>Has a strong or special association with a particular community or cultural group for social, cultural or spiritual reasons</i>
<b>Statement</b>	The Eight Mile Weir has a special association with residents of the nearby local townships, who have frequently visited the area over decades for leisure, irrigation purposes, with travelling stock, etc.
<b>Criteria</b>	<b>Definition</b>
<b>H</b>	<i>Has a special association with the life or work of a particular person, group or organisation of importance in the local government area's history.</i>
<b>Statement</b>	The Eight Mile Weir has a special association with the lives of important local persons, such as W. Fraser, C. Lloyd Jones, and C.H. Wilson.

HISTORY
<ul style="list-style-type: none"> <li>- The Eight Mile Weir is an existing structure built in the mid-20th century, which has historically been used for: travelling stock, irrigation purposes, and revenue production; as well as for fishing, swimming and other leisure activities.</li> <li>- Records mention construction of the weir in Aug 1941 at Eight Mile, where "a solid wall of stone three feet high" (ref: 2) was erected, and willow trees were planted on the outer banks to keep the banks firm.</li> <li>- The Eight Mile Weir demonstrates innovation from the local population. Instead of carrying out the job intended by chairman P.C Ferguson of having logs put in at the site, a number of men working under chairman Cr. A.A. Dyer found a nearby supply of stone that would "be as cheap to make a good job as a patched one" (ref: 3).</li> <li>- The venture was highly controversial within the local region, having been carried out under no authority from Barcaldine Shire Council, and costing approx. £100 under the justification of revenue being produced from watering fees when "very few mobs of travelling stock go that way" (ref: 4). One Longreach Leader article details Cr. W. Fraser &amp; Council's view that "putting £50 into the present structure occasionally was a waste of money" (ref: 5).</li> <li>- Nonetheless records show that following local debate on the Eight Mile Weir's funding £50 was eventually spent by Barcaldine Shire Council, and the venture had actually been a success. One article states that "there is now a large body of water...in one place six feet under" (ref:6).</li> <li>- The Eight Mile Weir also helps to yield information on the local area's history in regards to its association with the nearby Lloyd-Jones Weir, which was built approx. 140m north east of the Old Eight Mile Weir in Oct 1953. This association holds such importance for the local area's history as: being lobbied for by Shire Chairman C. Lloyd-Jones as an alternative to maintaining the Eight Mile Weir; employing 33 migrants living in pre-fabricated buildings near the site (some with families); and having maintenance in 1954-55 supervised by C.H. Wilson, founder of a successful local company now known as George Bourne &amp; Associates (ref: 5).</li> </ul>

DESCRIPTION
<ul style="list-style-type: none"> <li>- The Remains of the Eight Mile Weir are located at the end of Lloyd Jones Weir Road, approx. 140m south west of the Lloyd Jones Weir infrastructure.</li> <li>- The surviving materials lie across the river bed approx. 20m in width from bank to bank.</li> </ul>

REFERENCES
1. Longreach Leader (QLD. : 1923 – 1954), Saturday 2 August 1941, p 6. Accessed from: <a href="https://trove.nla.gov.au/newspaper/article/128608335">https://trove.nla.gov.au/newspaper/article/128608335</a>

2. Longreach Leader (QLD. : 1923 – 1954), Saturday 30 August 1941, p 7. Accessed from: <a href="https://trove.nla.gov.au/newspaper/article/128612008">https://trove.nla.gov.au/newspaper/article/128612008</a>
3. Longreach Leader (QLD. : 1923 – 1954), Saturday 22 November 1941, p 6. Accessed from: <a href="https://trove.nla.gov.au/newspaper/article/128609685">https://trove.nla.gov.au/newspaper/article/128609685</a>
4. Longreach Leader (QLD. : 1923 – 1954), Saturday 23 August 1941, p 7. Accessed from: <a href="https://trove.nla.gov.au/newspaper/article/128609082">https://trove.nla.gov.au/newspaper/article/128609082</a>
5. Longreach Leader (QLD. : 1923 – 1954), Saturday 22 August 1942, p 5. Accessed from: <a href="https://trove.nla.gov.au/newspaper/article/125067729">https://trove.nla.gov.au/newspaper/article/125067729</a>
6. Longreach Leader (QLD. : 1923 – 1954), Saturday 29 November 1941. Accessed from: <a href="https://trove.nla.gov.au/newspaper/article/128607255">https://trove.nla.gov.au/newspaper/article/128607255</a>
7. Hoch, I (2008) <i>The Barcaldine Story</i> , pg. 11. Published by Barcaldine Shire Council, 3rd Edition, Cranbrook Press.
*Special thanks to Barcaldine library volunteer Kaylene Reynolds for her research assistance in compiling information on the Eight Mile Weir.

HERITAGE BOUNDARY



<p>Figures: Top- Aerial of Heritage Boundary; Middle- Eight Mile's remaining structure looking to the southwest; Bottom- (left to right) Traditional Owners Tracy Harbottle and Steven Woods with BRC representative Graham Lawrence</p>



## 5.2. Original Muttaborra Cemetery

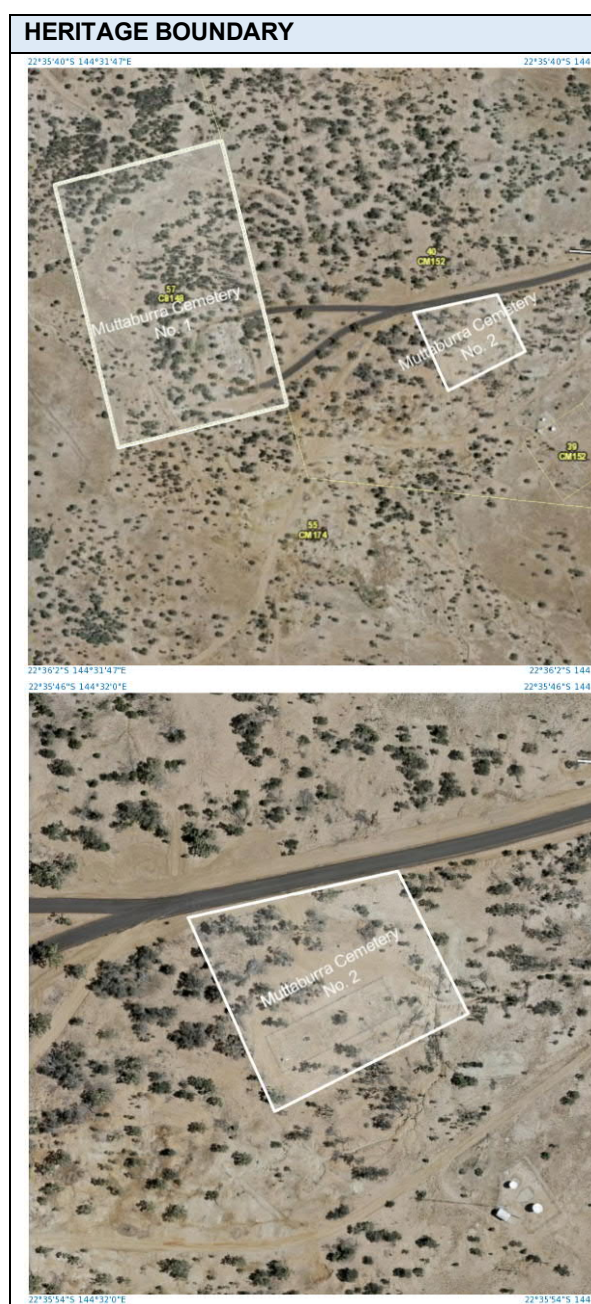
PLACE/ITEM DETAILS	
<b>Place</b>	Original Muttaborra Cemetery
<b>Other name</b>	Muttaborra Cemetery 2
<b>Location</b>	Muttaborra
<b>Address</b>	Muttaborra Cemetery Road
<b>RPD</b>	Lot 40 on CM152
<b>Local Government</b>	Barcaldine Regional Council
<b>Heritage Boundary</b>	See attached map

STATEMENT OF HERITAGE SIGNIFICANCE	
The Original Muttaborra Cemetery has Local Heritage Significance under the following Criteria.	
<b>Criteria</b>	<b>Definition</b>
<b>A</b>	<i>Is important in demonstrating the evolution or pattern of the local government area's history.</i>
<b>Statement</b>	The Original Muttaborra Cemetery is important in demonstrating the evolution and pattern of the region's history, including the establishment of settlements encouraging growth of local industry.
<b>Criteria</b>	<b>Definition</b>
<b>C</b>	<i>Has potential to yield information that will contribute to an understanding of the local government area's history.</i>
<b>Statement</b>	The Original Muttaborra Cemetery has the potential to yield information that will contribute to an understanding of the region's history, particularly burial practices, which illustrate the religious and cultural patterns of settlement and life in the district.
<b>Criteria</b>	<b>Definition</b>
<b>D</b>	<i>Is important in demonstrating the principal characteristics of a particular class of cultural places.</i>
<b>Statement</b>	The Original Muttaborra Cemetery is important in demonstrating the principle characteristics of a cemetery.

HISTORY	
<ul style="list-style-type: none"> <li>- One of the earliest recorded burials is of Frances Mallon, who died in 1880 at aged 39. He was a pioneer of the local region and a Muttaborra General Storekeeper (ref: 1).</li> <li>- The oldest recorded death was Samuel Briggs, a blacksmith who died on 16 April 1878, and buried by James William Abbott.</li> </ul>	

DESCRIPTION
<ul style="list-style-type: none"> <li>- Earliest established cemetery in Muttaborra.</li> <li>- The Original Muttaborra Cemetery is located approx. 1.25km west of the Muttaborra town centre, accessible via Muttaborra Cemetery Road off Cramsie Muttaborra Road.</li> <li>- The cemetery reserve is approx. 60m x 20m in size.</li> </ul>

REFERENCES
1. <a href="https://billiongraves.com/grave/Frances-Mallon/24791750">https://billiongraves.com/grave/Frances-Mallon/24791750</a>
*Special thanks to Barcaldine Regional Council Councillor Jenni Gray for her research assistance in compiling information on the Muttaborra Cemeteries.



### 5.3. Original Alpha Cemetery

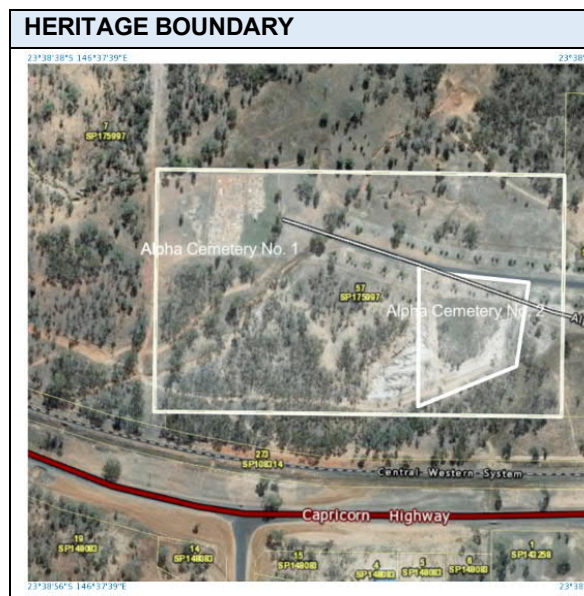
PLACE/ITEM DETAILS	
Place	Original Alpha Cemetery
Other name	Alpha Cemetery 2
Location	Alpha
Address	Alpha Cemetery Road off Clermont Alpha Road
RPD	Lot 57 on SP175997
Local Government	Barcardine Regional Council
Heritage Boundary	See attached map

STATEMENT OF HERITAGE SIGNIFICANCE	
The Original Alpha Cemetery has Local Heritage Significance under the following Criteria.	
Criteria	Definition
<b>A</b>	<i>Is important in demonstrating the evolution or pattern of the local government area's history.</i>
<b>Statement</b>	The Original Alpha Cemetery is important in demonstrating the evolution and pattern of the region's history, including the establishment of settlements encouraging growth of local industry.
Criteria	Definition
<b>C</b>	<i>Has potential to yield information that will contribute to an understanding of the local government area's history.</i>
<b>Statement</b>	The Original Alpha Cemetery has the potential to yield information that will contribute to an understanding of the region's history, particularly burial practices, which illustrate the religious and cultural patterns of settlement and life in the district.
Criteria	Definition
<b>D</b>	<i>Is important in demonstrating the principal characteristics of a particular class of cultural places.</i>
<b>Statement</b>	The Original Alpha Cemetery is important in demonstrating the principle characteristics of a cemetery.

HISTORY	
-	One of the earliest recorded burials is of John Jacob Gaebel, who died in 1886 at the age of 41 (ref: 1).
-	The cemetery held burials of the following persons holding importance in the district: Mrs M'Mah at age 80, a well-known resident of 25 years who beared six children (ref: 2); Mr Charles Markwell at age 40 who was a well-known jockey (ref: 3); and Mr William Hugo Lambert at age 42, a well-known shearer (ref: 4)

DESCRIPTION
- The Original Alpha Cemetery is located within the same Lot/Plan as Alpha Cemetery No. 1, approx. 1km North West of the Alpha town centre, accessible via Alpha Cemetery Road off Clermont Alpha Road.
- The cemetery reserve is 255m x 435m, however Alpha Cemetery No. 2 is approx. 120m x 140m.

REFERENCES
1. <a href="https://billiongraves.com/grave/John-Jacob-Gaebel/19961826">https://billiongraves.com/grave/John-Jacob-Gaebel/19961826</a>
2. <i>The Courier-Mail</i> (Brisbane, Qld. : 1933 - 1954) Tuesday 26 December 1933, p 2.
3. <i>The Brisbane Courier</i> (Qld. : 1864 - 1933) Friday 10 August 1928, p 12.
4. <i>The Central Queensland Herald</i> (Rockhampton, Qld: 1930 - 1956) Thursday 29 January 1931 p 37







## 6.0 PLACES AND ITEMS OF CULTURAL HERITAGE CURRENTLY ON THE BRC PLANNING SCHEME

<b>Place</b>	Aramac Cemetery
<b>Location</b>	Aramac
<b>RPD</b>	Lot 55 on A 1843
<b>Local Government</b>	Barcaldine Regional Council
<b>Heritage Boundary</b>	See attached map

<b>Place</b>	Muttaburra Cemetery
<b>Location</b>	Muttaburra
<b>RPD</b>	Lot 57 on C8148
<b>Local Government</b>	Barcaldine Regional Council
<b>Heritage Boundary</b>	See attached map

<b>Place</b>	Barcaldine Cemetery
<b>Location</b>	Barcaldine
<b>RPD</b>	Lot 228 on RY38
<b>Local Government</b>	Barcaldine Regional Council
<b>Heritage Boundary</b>	See attached map

<b>Place</b>	Alpha Cemetery
<b>Location</b>	Alpha
<b>RPD</b>	Lot 57 on A3017
<b>Local Government</b>	Barcaldine Regional Council
<b>Heritage Boundary</b>	See attached map

<b>Place</b>	Jericho Cemetery
<b>Location</b>	Jericho
<b>RPD</b>	Lot 1 on C8257
<b>Local Government</b>	Barcaldine Regional Council
<b>Heritage Boundary</b>	See attached map

<b>Place</b>	Pine Hill Cemetery
<b>Location</b>	Pine Hill
<b>RPD</b>	Lot 12 on P2781
<b>Local Government</b>	Barcaldine Regional Council
<b>Heritage Boundary</b>	See attached map

### 6.1. Aramac Cemetery

PLACE/ITEM DETAILS	
Place	Aramac Cemetery
Former/other name	-
Location	Aramac
Address	Aramac Cemetery Road off Muttaborra Aramac Road.
RPD	Lot 55 on A1843
Local Government	Barcaldine Regional Council
Heritage Boundary	See attached map
Planning Scheme	Aramac Shire Planning Scheme
QLD Government Gazette Date/Number	Original: No. 45/30.06.2006 Amendment No.1: No. 68/29.11.2013

STATEMENT OF HERITAGE SIGNIFICANCE	
The Aramac Cemetery has Local Heritage Significance under the following Criteria.	
Criteria	Definition
A	<i>Is important in demonstrating the evolution or pattern of the local government area's history.</i>
Statement	The Aramac Cemetery is important in demonstrating the evolution and pattern of the region's history, including the establishment of settlements encouraging growth of local industry.
Criteria	Definition
C	<i>Has potential to yield information that will contribute to an</i>

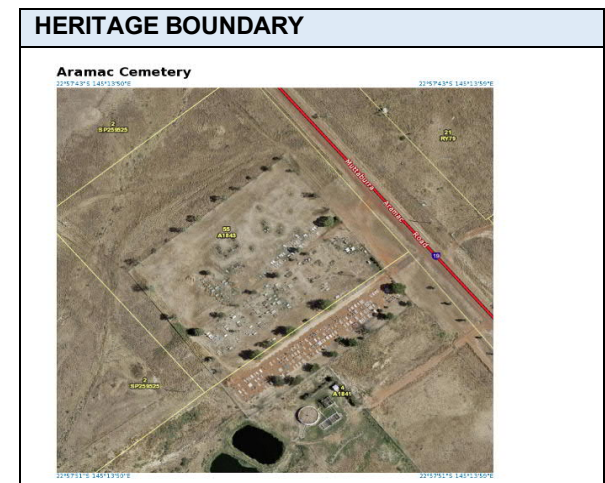
	<i>understanding of the local government area's history.</i>
Statement	The Aramac Cemetery has the potential to yield information that will contribute to an understanding of the region's history, particularly burial practices, which illustrate the religious and cultural patterns of settlement and life in the district.
Criteria	Definition
D	<i>Is important in demonstrating the principal characteristics of a particular class of cultural places.</i>
Statement	The Aramac Cemetery is important in demonstrating the principle characteristics of a cemetery.
Criteria	Definition
H	<i>Has a special association with the life or work of a particular person, group or organisation of importance in the local government area's history.</i>
Statement	Aramac Cemetery has a special association with the life of particular persons holding importance to the local area, such as William J. Ford.

HISTORY
<ul style="list-style-type: none"> <li>- One of the earliest recorded burials is of James Richardson, son of John &amp; Mary Richardson, who died in 1881 at the age of 2 months (ref: 1).</li> <li>- A special association with the life of particular person holding importance to the local area is with William J. Ford, who was "a good friend to the district", and lived 51 years on from having his body and limbs paralysed after being thrown from a horse while working on Bowen Downs in 1900. The level of respect from locals was shown by his</li> </ul>

employers, who "overlanded him by dray and horse-drawn vehicles to the last point on the Central-west railway" from where he was taken to a hospital to be operated on, having his limbs fully restored. He died in 1951 from a heart ailment and was buried in Aramac Cemetery.

DESCRIPTION
<ul style="list-style-type: none"> <li>- The Alpha Cemetery is located approx. 1.5km north east of the Aramac town centre, accessible via Aramac Cemetery Road off Muttaborra Aramac Road.</li> <li>- The cemetery reserve is approx. 165m x 165m in size.</li> <li>- The Heritage Boundary encapsulates the entire land parcel of Lot 55 on A1843.</li> </ul>

REFERENCES
<ol style="list-style-type: none"> <li>1. <a href="http://austcemindex.com/inscription?id=7166544#images">http://austcemindex.com/inscription?id=7166544#images</a></li> <li>2. <a href="https://trove.nla.gov.au/newspaper/article/75324383?searchTerm=aramac%20cemetery%20%20%20%20%20%20%20%20%20%20%20&amp;searchLimits=">https://trove.nla.gov.au/newspaper/article/75324383?searchTerm=aramac%20cemetery%20%20%20%20%20%20%20%20%20%20%20&amp;searchLimits=</a></li> </ol>



## 6.2. Muttaborra Cemetery

PLACE/ITEM DETAILS	
Place	Muttaborra Cemetery
Other Name	Muttaborra Cemetery No. 1
Location	Muttaborra
Address	Muttaborra Cemetery Road
RPD	Lot 57 on C8148
Local Government	Barcaldine Regional Council
Heritage Boundary	See attached map
Planning Scheme	Aramac Shire Planning Scheme
QLD Government Gazette Date/Number	Original: No. 45/30.06.2006 Amendment No.1: No. 68/29.11.2013


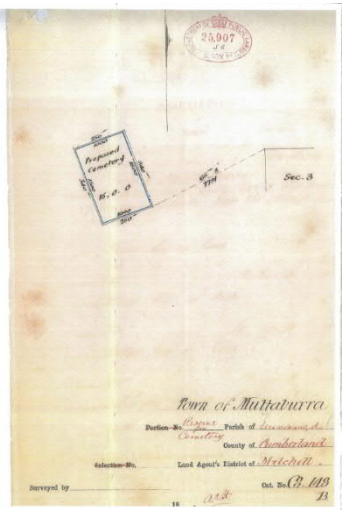
STATEMENT OF HERITAGE SIGNIFICANCE	
The Muttaborra Cemetery has Local Heritage Significance under the following Criteria.	
Criteria	Definition
A	<i>Is important in demonstrating the evolution or pattern of the local government area's history.</i>
Statement	The Muttaborra Cemetery is important in demonstrating the evolution and pattern of the region's history, including the establishment of settlements encouraging growth of local industry.
Criteria	Definition
C	<i>Has potential to yield information that will contribute to an understanding of the local government area's history.</i>

Statement	The Muttaborra Cemetery has the potential to yield information that will contribute to an understanding of the region's history, particularly burial practices, which illustrate the religious and cultural patterns of settlement and life in the district.
Criteria	Definition
D	<i>Is important in demonstrating the principal characteristics of a particular class of cultural places.</i>
Statement	The Muttaborra Cemetery is important in demonstrating the principle characteristics of a cemetery.

HISTORY
<ul style="list-style-type: none"> <li>- This cemetery is the more recently established of the two in Muttaborra, gazetted in 16 June 1885,</li> <li>- On 27 APR 1901 the Gov. Gazette announced the official cemetery Trustees to be Thomas Cooney, Robert Booth, and Henry Bennett, &amp; in 1902 George Bailey &amp; Ernest Lake were added (ref: 1).</li> <li>- The earliest recorded burial was in 05 June 1886 for a man named Frederick Lanford Hart (ref: 2).</li> </ul>

DESCRIPTION
<ul style="list-style-type: none"> <li>- Muttaborra Cemetery No. 02 is located approx. 1.5km west of the Muttaborra town centre, and is accessible via Muttaborra Cemetery Road off Cramsie Muttaborra Road.</li> <li>- The cemetery reserve is approx. 200m x 300m in size.</li> <li>- The Heritage Boundary encapsulates the entire land parcel of Lot 57 on C8148.</li> </ul>

REFERENCES
<ol style="list-style-type: none"> <li>1. Materials supplied by DNRME 03/07/2019.</li> <li>2. <a href="https://billiongraves.com/grave/Frederick-Lanford-Hart/24803110">https://billiongraves.com/grave/Frederick-Lanford-Hart/24803110</a></li> </ol> <p>*Special thanks to Barcaldine Regional Council Councillor Jenni Gray for her research assistance in compiling information on the Muttaborra Cemeteries.</p>

HERITAGE BOUNDARY
<p>Muttaborra Cemetery</p> 
 <p>Original Plans for the cemetery by the Department of Public Lands, dating to 5<sup>th</sup> November 1885 (ref: 1)</p>



### 6.3. Barcaldine Cemetery

PLACE/ITEM DETAILS	
Place	Barcaldine Cemetery
Former/other name	-
Location	Barcaldine
Address	Corner of Capricorn Highway and Whitewood Drive
RPD	Lot 228 on RY38
Local Government	Barcaldine Regional Council
Heritage Boundary	See attached map
Planning Scheme	Barcaldine Shire Planning Scheme
QLD Government Gazette Date/Number	Original: No. 45/30.06.2006 Amendment No.1: No. 68/29.11.2013

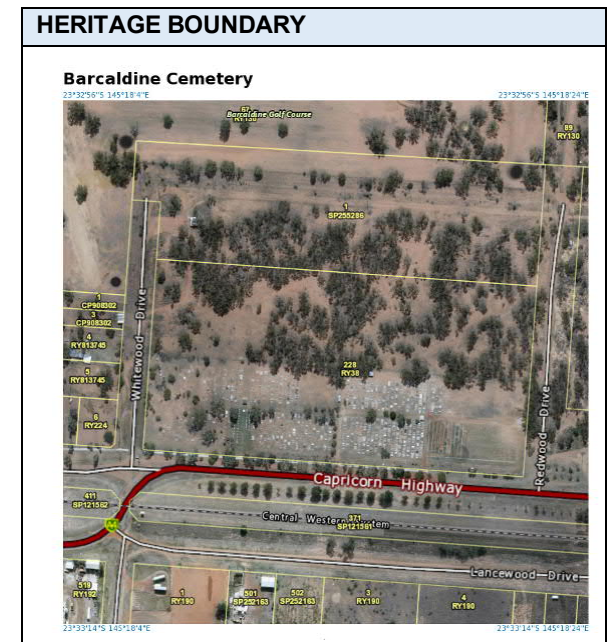
STATEMENT OF HERITAGE SIGNIFICANCE	
The Barcaldine Cemetery has Local Heritage Significance under the following Criteria.	
Criteria	Definition
A	<i>Is important in demonstrating the evolution or pattern of the local government area's history.</i>
Statement	The Barcaldine Cemetery is important in demonstrating the evolution and pattern of the region's history, including the establishment of settlements encouraging growth of local industry.
Criteria	Definition
C	<i>Has potential to yield information that will contribute to an understanding of the local government area's history.</i>

Statement	The Barcaldine Cemetery has the potential to yield information that will contribute to an understanding of the region's history, particularly burial practices, which illustrate the religious and cultural patterns of settlement and life in the district.
Criteria	Definition
D	<i>Is important in demonstrating the principal characteristics of a particular class of cultural places.</i>
Statement	The Barcaldine Cemetery is important in demonstrating the principle characteristics of a cemetery.
Criteria	Definition
H	<i>Has a special association with the life or work of a particular person, group or organisation of importance in the local government area's history.</i>
Statement	The Barcaldine Cemetery has a special association with the life of particular persons holding importance to the local area, such as late 19 <sup>th</sup> C trustee J. Lloyd-Jones

HISTORY
<ul style="list-style-type: none"> <li>- One of the earliest recorded burials is of Edith Laura Parnell who died in 1887 at the age of 18 months. She was the daughter of Arthur and Barbara Parnell, and was buried next their second daughter Edith Olive, who died 5th July 1890, aged 3 years (ref: 1)</li> <li>- One late 19th century trustee of the Barcaldine cemetery was J. Lloyd-Jones, who lived as a prominent member of local society as the secretary of the Barcaldine Progress Association (ref: 1 &amp; 2)</li> </ul>

DESCRIPTION
<ul style="list-style-type: none"> <li>- The Barcaldine Cemetery is located to the east of the Barcaldine town centre, accessible via the corner of Capricorn Highway and Whitewood Drive.</li> <li>- The cemetery reserve is approx. 200m x 400m</li> <li>- The Heritage Boundary encapsulates the entire land parcel of Lot 228 on RY38</li> </ul>

REFERENCES
<ol style="list-style-type: none"> <li>1. <a href="https://billiongraves.com/grave/Edith-Laura-Parnell/11362603">https://billiongraves.com/grave/Edith-Laura-Parnell/11362603</a></li> <li>2. Hoch, I (2008) <i>The Barcaldine Story</i>, pg. 31. Published by Barcaldine Shire Council, 3rd Edition, Cranbrook Press.</li> <li>3. <i>The Western Champion and General Advertiser for the Central-Western Districts</i> (Barcaldine, Qld. : 1892 - 1922) Tuesday 2 August 1892, p 5.</li> </ol>



## 6.4. Alpha Cemetery

PLACE/ITEM DETAILS	
<b>Place</b>	Alpha Cemetery
<b>Former/other name</b>	Alpha Cemetery No. 1
<b>Location</b>	Alpha
<b>Address</b>	Alpha Cemetery Road off Clermont Alpha Road
<b>RPD</b>	Lot 57 on SP175997
<b>Local Government</b>	Barcaldine Regional Council
<b>Heritage Boundary</b>	See attached map
<b>Planning Scheme</b>	Jericho Shire Planning Scheme
<b>QLD Government Gazette Date/Number</b>	Original: No. 39/23.06.2006 Amendment No.1: No. 68/29.11.2013

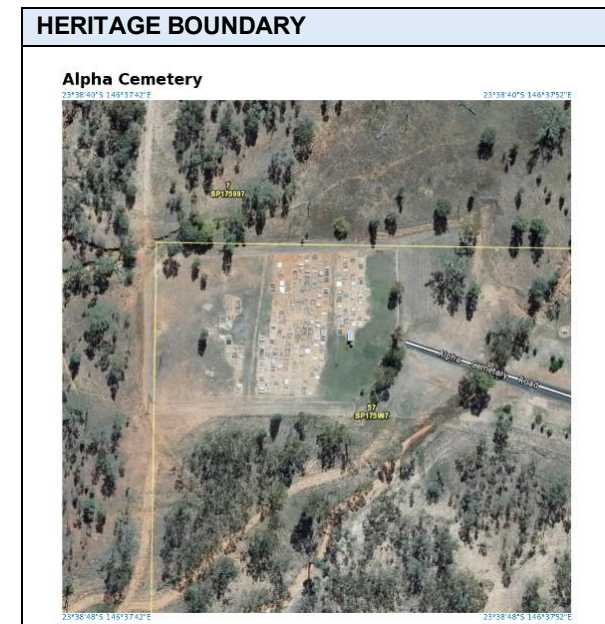
STATEMENT OF HERITAGE SIGNIFICANCE	
The Alpha Cemetery has Local Heritage Significance under the following Criteria.	
<b>Criteria</b>	<b>Definition</b>
<b>A</b>	<i>Is important in demonstrating the evolution or pattern of the local government area's history.</i>
<b>Statement</b>	The Alpha Cemetery is important in demonstrating the evolution and pattern of the region's history, including the establishment of settlements encouraging growth of local industry.
<b>Criteria</b>	<b>Definition</b>
<b>C</b>	<i>Has potential to yield information that will contribute to an understanding of the local government area's history.</i>

<b>Statement</b>	The Alpha Cemetery has the potential to yield information that will contribute to an understanding of the region's history, particularly burial practices, which illustrate the religious and cultural patterns of settlement and life in the district.
<b>Criteria</b>	<b>Definition</b>
<b>D</b>	<i>Is important in demonstrating the principal characteristics of a particular class of cultural places.</i>
<b>Statement</b>	The Alpha Cemetery is important in demonstrating the principle characteristics of a cemetery.
<b>Criteria</b>	<b>Definition</b>
<b>H</b>	<i>Has a special association with the life or work of a particular person, group or organisation of importance in the local government area's history.</i>
<b>Statement</b>	The Alpha Cemetery has a special association with the life of particular persons holding importance to the local area, such Mrs M'Mah, Mr Markwell, and Mr Lambert.

HISTORY	
<ul style="list-style-type: none"> <li>- One of the earliest recorded burials is of John Jacob Gaebel, who died in 1886 at the age of 41 (ref: 1).</li> <li>- The cemetery held burials of the following persons holding importance in the district: Mrs M'Mah at age 80, a well-known resident of 25 years who bore six children (ref: 2); Mr Charles Markwell at age 40 who was a well-known jockey (ref: 3); and Mr William Hugo Lambert at age 42, a well-known shearer (ref: 4)</li> </ul>	

DESCRIPTION
<ul style="list-style-type: none"> <li>- The Alpha Cemetery is located approx. 1km north west of the Alpha town centre, accessible via Alpha Cemetery Road off Clermont Alpha Road.</li> <li>- The cemetery reserve is approx. 255m x 435m</li> <li>- The Heritage Boundary encapsulates the entire land parcel of Lot 57 on SP175997, which also includes the Heritage Boundary of Alpha Cemetery No. 2 (see Section 5.3 above).</li> </ul>

REFERENCES
<ol style="list-style-type: none"> <li>1. <a href="https://billiongraves.com/grave/John-Jacob-Gaebel/19961826">https://billiongraves.com/grave/John-Jacob-Gaebel/19961826</a></li> <li>2. <i>The Courier-Mail</i> (Brisbane, Qld. : 1933 - 1954) Tuesday 26 December 1933, p 2.</li> <li>3. <i>The Brisbane Courier</i> (Qld. : 1864 - 1933) Friday 10 August 1928, p 12.</li> <li>4. <i>The Central Queensland Herald</i> (Rockhampton, Qld: 1930 - 1956) Thursday 29 January 1931 p 37</li> </ol>



## 6.5. Jericho Cemetery

PLACE/ITEM DETAILS	
Place	Jericho Cemetery
Former/other name	-
Location	Jericho
Address	Corner of Davy and Lyon Streets.
RPD	Lot 1 on C8257
Local Government	Barcaldine Regional Council
Heritage Boundary	See attached map
Planning Scheme	Jericho Shire Planning Scheme
QLD Government Gazette Date/Number	Original: No. 39/23.06.2006 Amendment No.1: No. 68/29.11.2013

STATEMENT OF HERITAGE SIGNIFICANCE	
The Jericho Cemetery has Local Heritage Significance under the following Criteria.	
Criteria	Definition
A	<i>Is important in demonstrating the evolution or pattern of the local government area's history.</i>
Statement	The Jericho Cemetery is important in demonstrating the evolution and pattern of the region's history, including the establishment of settlements encouraging growth of local industry.
Criteria	Definition
C	<i>Has potential to yield information that will contribute to an understanding of the local government areas' history.</i>

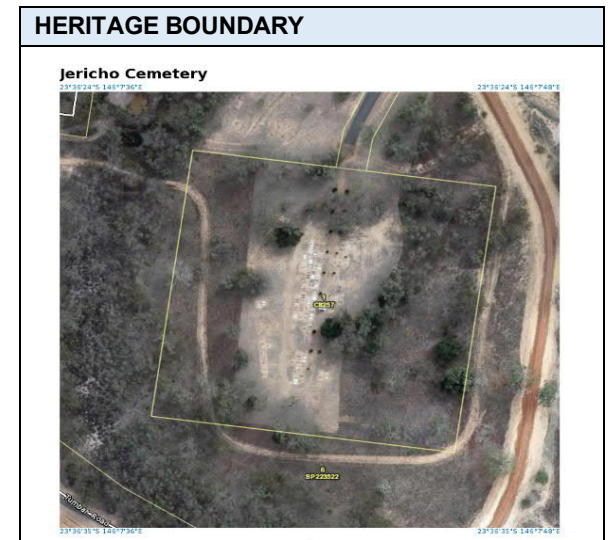
Statement	The Jericho Cemetery has the potential to yield information that will contribute to an understanding of the region's history, particularly burial practices, which illustrate the religious and cultural patterns of settlement and life in the district.
Criteria	Definition
D	<i>Is important in demonstrating the principal characteristics of a particular class of cultural places.</i>
Statement	The Jericho Cemetery is important in demonstrating the principle characteristics of a cemetery.
Criteria	Definition
H	<i>Has a special association with the life or work of a particular person, group or organisation of importance in the local government area's history.</i>
Statement	The Jericho Cemetery has a special association with the lives and work of important persons such as Mr Shaw and the Bush Nursing Association.

HISTORY
- One of the earliest recorded burials is of Michael Nowland, who died in 1886 at the age of 56 (ref: 1). Two earlier burials are also recorded however for Joseph Houston Wooley in 1885 aged 3 months, and William Henry Young-Sing in 1883 (ref: 2).
- The cemetery held the burial of Mr Alexander Shaw, known as one of the oldest pioneers in the west, and highly regarded across western QLD (ref 3).
- The cemetery also holds association to the Bush Nursing Association, which held a social, dance, and entertainment fundraising event/festival in

1934 for funds to erect a shelter shed at the cemetery (ref: 4).

DESCRIPTION
- The Jericho Cemetery is located approx. 1km south east of the Jericho town centre, accessible via the corner of Davy and Lyon Streets.
- The cemetery reserve is approx. 200m x 200m.
- The Heritage Boundary encapsulates the entire land parcel of Lot 1 on C8257.

REFERENCES
1. <a href="https://billiongraves.com/grave/Michael-Nowland/24831705">https://billiongraves.com/grave/Michael-Nowland/24831705</a>
2. <a href="http://austcemindex.com/?cemetery=jericho&amp;state=QLD&amp;min_death=1870&amp;max_death=1900">http://austcemindex.com/?cemetery=jericho&amp;state=QLD&amp;min_death=1870&amp;max_death=1900</a>
3. <i>The Central Queensland Herald</i> (Rockhampton, Qld. : 1930 - 1956) Thursday 5 January 1939, p 51.
4. <i>The Central Queensland Herald</i> (Rockhampton, Qld. : 1930 - 1956) Thursday 28 June 1934, p 40.





## 6.6. Pine Hill Cemetery

PLACE/ITEM DETAILS	
Place	Pine Hill Cemetery
Former/other name	-
Location	Pine Hill
Address	Tango Road off the Capricorn Highway.
RPD	Lot 12 on P2781
Local Government	Barcaldine Regional Council
Heritage Boundary	See attached map
Planning Scheme	Jericho Shire Planning Scheme
QLD Government Gazette Date/Number	Original: No. 39/23.06.2006 Amendment No.1: No. 68/29.11.2013

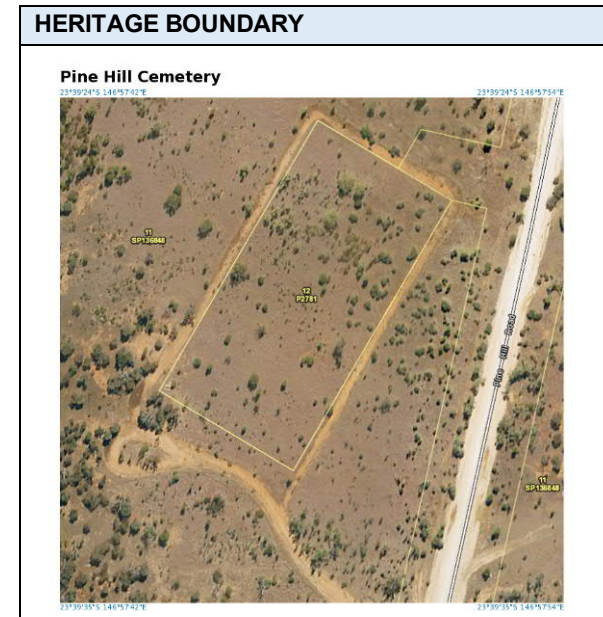
STATEMENT OF HERITAGE SIGNIFICANCE	
The Pine Hill Cemetery has Local Heritage Significance under the following Criteria.	
Criteria	Definition
A	<i>Is important in demonstrating the evolution or pattern of the local government area's history.</i>
Statement	The Pine Hill Cemetery is important in demonstrating the evolution and pattern of the region's history, including the establishment of settlements encouraging growth of local industry.
Criteria	Definition
C	<i>Has potential to yield information that will contribute to an understanding of the local government area's history.</i>

Statement	The Pine Hill Cemetery has the potential to yield information that will contribute to an understanding of the region's history, particularly burial practices, which illustrate the religious and cultural patterns of settlement and life in the district.
Criteria	Definition
D	<i>Is important in demonstrating the principal characteristics of a particular class of cultural places.</i>
Statement	The Pine Hill Cemetery is important in demonstrating the principle characteristics of a cemetery.

HISTORY	
<ul style="list-style-type: none"> <li>- One of the first recorded burials in Pine Hill is of Christina Schneider aged who died in 1984, which is recorded on her husband Christoph Schneider's epitaph that resides in the Barcaldine Cemetery (ref: 1).</li> <li>- One of the oldest recorded deaths on a gravestone at the Pine Hill cemetery dates to 1892 for Thomas Joseph Betty, which is also dedicated to his wife Emily Betty who died in 1922 (ref: 2)</li> </ul>	

DESCRIPTION	
<ul style="list-style-type: none"> <li>- The Pine Hill Cemetery is located approx. 1km south east of the Pine Hill train station and 33km east of the Alpha town centre, accessible via Tango Road off the Capricorn Highway.</li> <li>- The cemetery reserve is approx. 100m x 200m in size.</li> <li>- The Heritage Boundary encapsulates the entire land parcel of Lot 12 on P2781.</li> </ul>	

REFERENCES
1. <a href="https://billiongraves.com/grave/Christina-Schneider/11362392">https://billiongraves.com/grave/Christina-Schneider/11362392</a>
2. <a href="http://austcemindex.com/?cemetery=pine+hill&amp;state=QLD&amp;min_death=1870&amp;max_death=1900">http://austcemindex.com/?cemetery=pine+hill&amp;state=QLD&amp;min_death=1870&amp;max_death=1900</a>





## 7.0 REFERENCES

CHTP (2013) "Aramac Shire Planning Scheme", Version 2, Effective as of 29 November 2013 Consolidated – Incorporating Amendment No. 1.

CHTP (2013) "Barcaldine Shire Planning Scheme", Version 2, Effective as of 29 November 2013 Consolidated – Incorporating Amendment No. 1.

CHTP (2013) "Jericho Shire Planning Scheme", Version 2, Effective as of 29 November 2013 Consolidated – Incorporating Amendment No. 1.

DES (2019) "About the Queensland Heritage Register", accessed from:  
<https://www.qld.gov.au/environment/land/heritage/register/search>

DEHP (2017) "Assessing cultural heritage significance: Using the cultural heritage criteria", accessed from: [https://www.qld.gov.au/data/assets/pdf\\_file/0030/66693/using-the-criteria.pdf](https://www.qld.gov.au/data/assets/pdf_file/0030/66693/using-the-criteria.pdf)

\*For all other references, see "References" information box within each BRC Local Heritage Register entry.